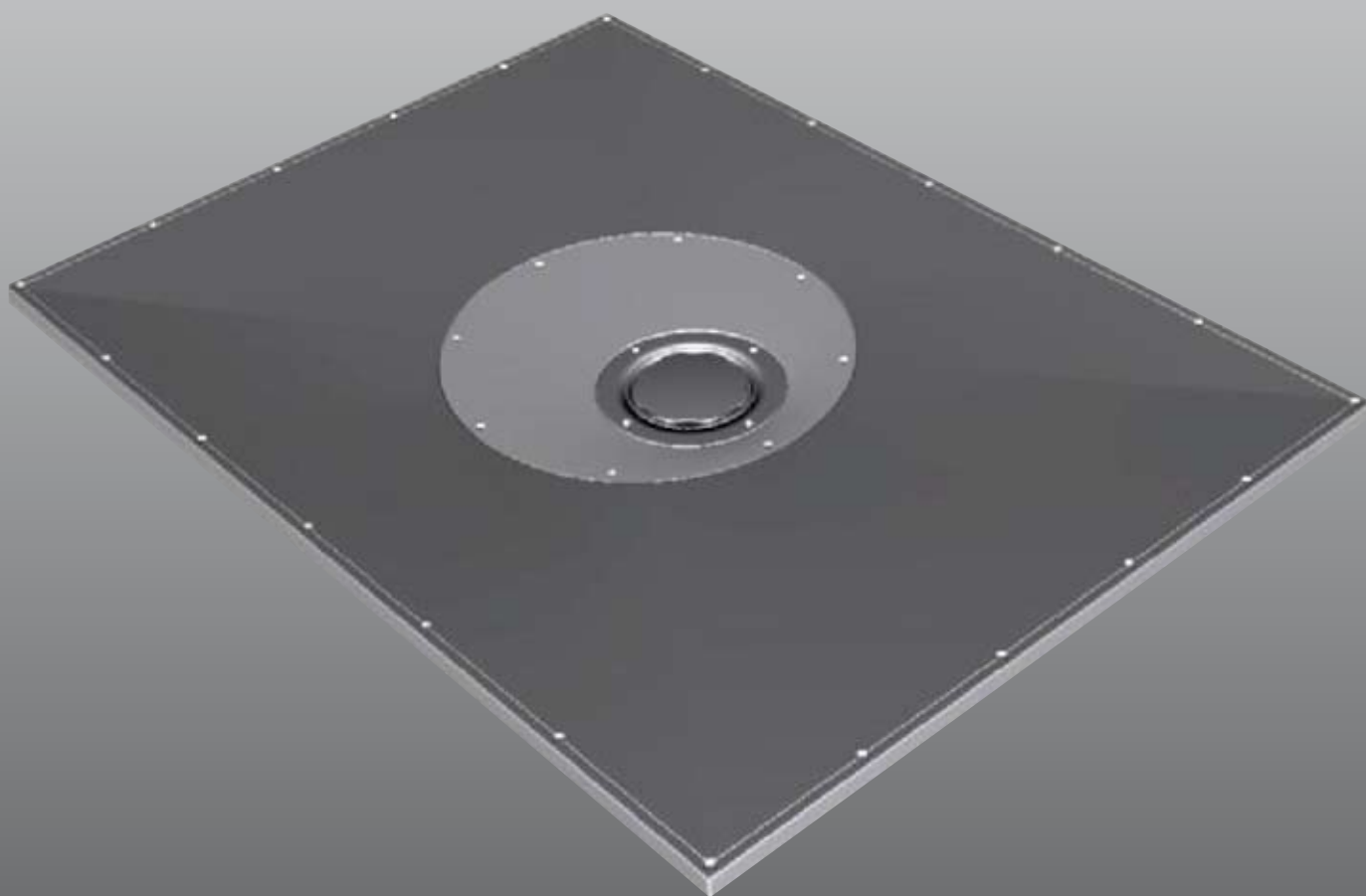
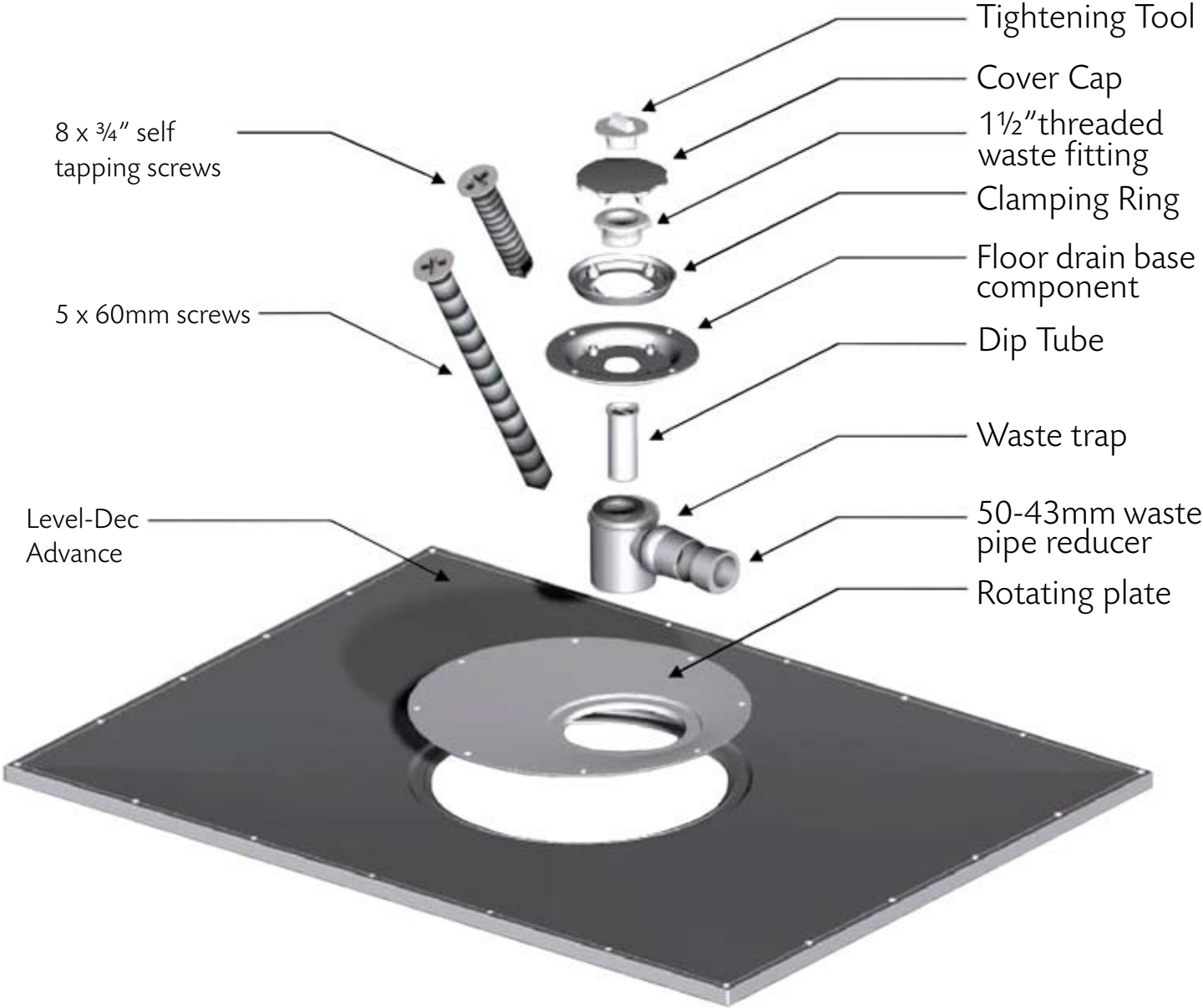


# Level-Dec Advance Installation Guide



# Component Content List



Please read the installation instructions carefully before proceeding.

\* The dec and gully are designed to be installed level and flush with the finished floor.

\* Prior to commencing with the installation, check the existing floor is level. If it is not, this will need to be corrected otherwise any water that escapes the graded area will puddle outside of the wet area.

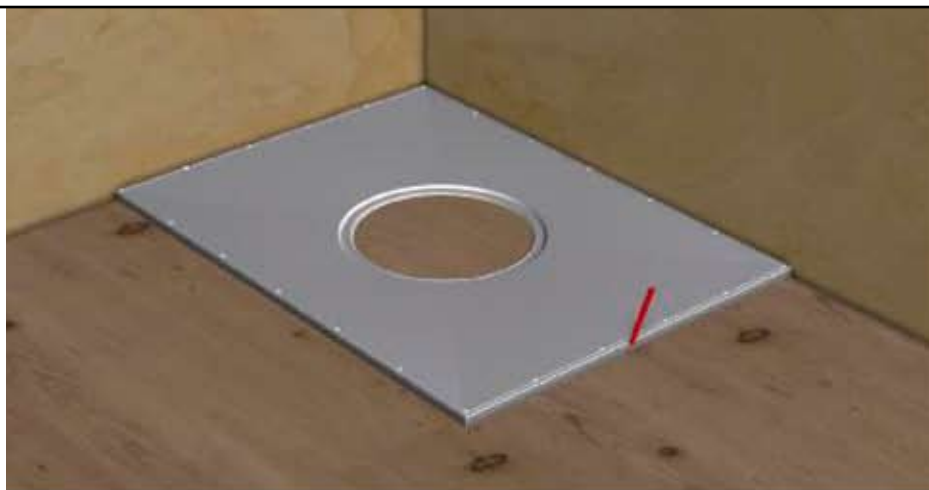
\* Please note we recommend a flow rate no greater than 34L/min for use with this product. Ensure your shower unit does not exceed this\*.

\* As with any wet-room, there may be splashes of water outside the graded area. Depending on the room lay-out, consideration should be given to use of a shower screen and to the positioning of other bathroom furniture.

*\*Flow rates stated are maximum and are subject to variation depending on site conditions and tray size. Site conditions include the type, position and number of shower sprays. All products must be installed strictly to manufacturers instructions and may be subject to change without prior notice. Please contact our technical department for further information.*

1

Position the Level-Dec Advance in the desired location on the floor boards and mark around the outer edge.



2

Using a suitable saw, cut along the outline then remove the floor boards.

**Use extreme care whilst cutting the floor as there may be hidden pipes and cables.**



3

Fit noggins to support the outer edges. The noggins must be positioned so the cut edges of the floorboard and Level-Dec are supported by the same timber to prevent movement at the join.



4

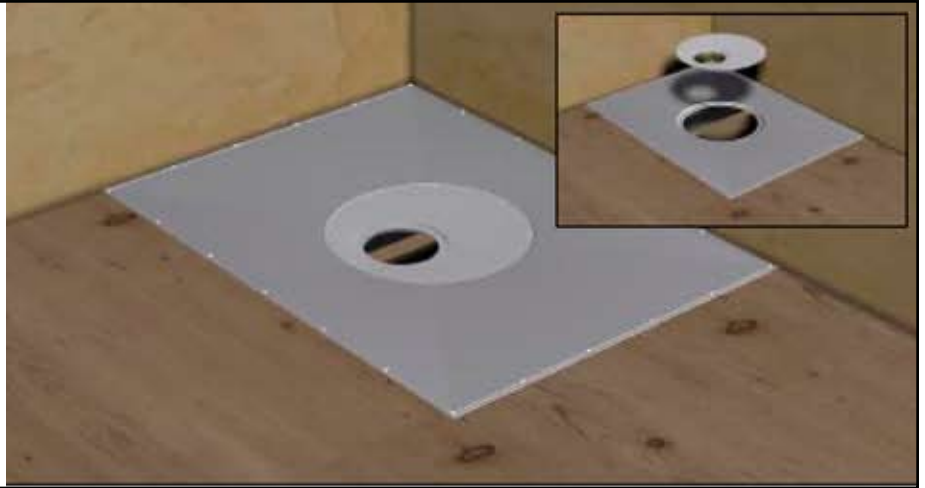
Replace the dec onto the joists<sup>1</sup> and noggins to check that it fits into the prepared area.

**Note: (do not fix into place)**



5

Place the rotating plate onto the Dec. If the drain position interferes with a joist or any other obstacle simply rotate the plate to a suitable position.



6

Check the location of the joists/noggins/pipes etc and adjust the drain position accordingly to enable further installation of the drain. Measure from the outer edges of the Dec to the centre of the drain. Use these dimensions to position the centre of the waste gully in the next two stages.



7

If a joist runs across the center of the plate additional treatment will need to be carried out. This may require a small amount of chiseling to allow for the underside of the floor drain base component. Remove the dec and rotating plate and place to one side.

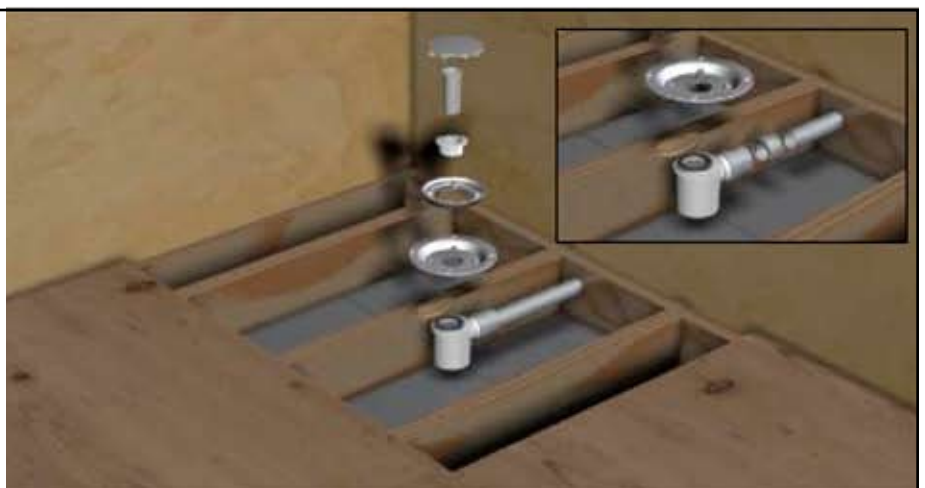


8

Place the trap in position and connect it to the waste pipe as shown. **If you are using 43mm waste pipe, the waste pipe reducer is required.**

Position the trap so that it aligns with the drain hole in the previously adjusted rotating plate.

Place the floor drain components, waste fitting and dip tube to one side as they will be required later.



9

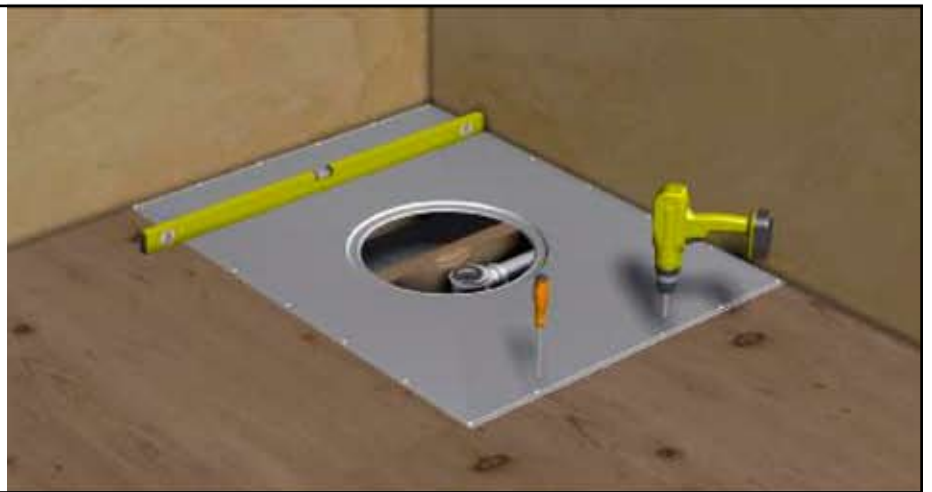
Replace the Dec and ensure it is perfectly level. This is very important to achieve correct drainage.

The surrounding floor must also be checked for level. If it is not, we strongly recommend that this is corrected as it may cause water to puddle outside of the shower area.



10

While ensuring the Dec is perfectly level, drill and screw the Dec to the joists/noggins below using the screws provided (5x60mm). It is essential that the surrounding floor is level with the top of the Dec. Raise the level of the Dec or the surrounding floor using suitable plywood sheets if necessary.



11

Place the rotating plate onto the Dec and drill using 3mm drill bit and screw the rotating plate to the Dec using the self tapping screws provided (8x3/4"). Ensure that it is aligned with the previously installed trap.



12

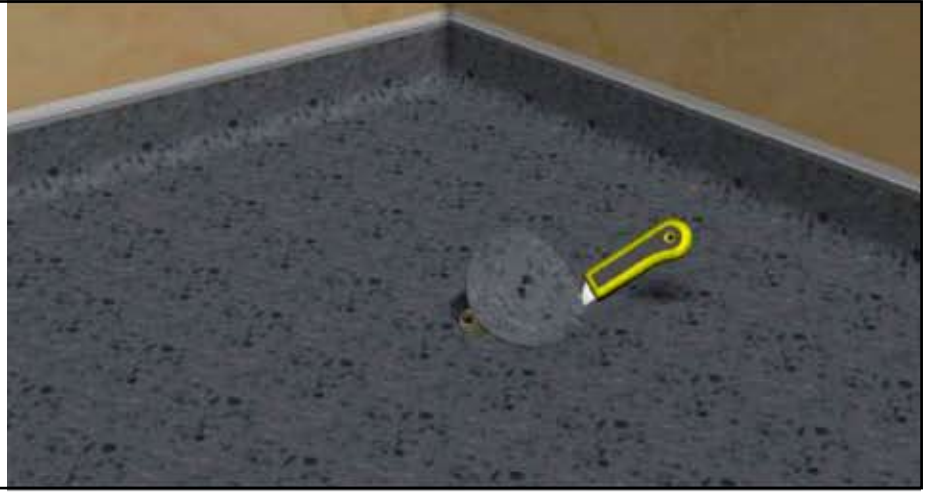
Using a 50mm hole saw drill a hole in the centre of the floor drain base component.

Place the floor drain base component onto the rotating plate. Drill using 3mm drill bit and screw the floor drain base component to the rotating plate using self tapping screws provided (8x3/4").



**13**

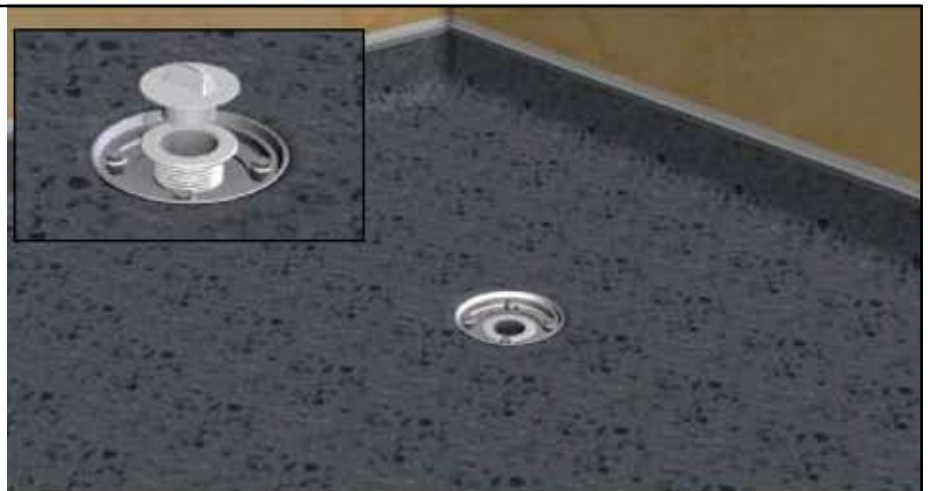
Lay the vinyl flooring in an approved manner. Press the vinyl into the base component and locate the centre. Mark a 111mm diameter circle located around the centre point previously identified and cut out using a sharp knife.

**14**

Dress the base vinyl into the base component and place the clamping ring into position and secure using the screws provided (M5x12).

**15**

Place the 1½" waste fitting through the hole in the floor drain box component and screw it into the top of the waste trap.

**16**

Insert the dip tube into the waste trap. Ensure it is pushed securely into position.



**17**

Fit top cover. You have now finished the installation of the Level Dec Advance. The tiling of the walls can now be completed.

